

05/2019

GRAND AVENUE (HPL)

INSTALLATION INSTRUCTIONS

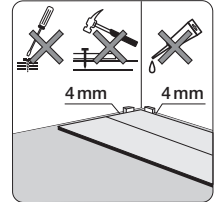


1. IMPORTANT INFORMATION

FLOATING FLOOR

BerryAlloc Grand Avenue must be installed as floating flooring, which means that:

- The installation of the floor must be the last operation to be performed on the job site.
- The floorboards must not be screwed/glued/tacked/pressed/fastened to the subfloor or any fixed constructions (e.g. kitchen cabinets and fireplaces are NOT to be installed on top of the flooring).
- Use a compressible filler (BerryAlloc FillerTwine) as termination towards edges prior using silicone
- Leave a 4 mm expansion to walls and other fixed constructions so that the flooring can move in any direction. Leave a bit bigger gap to walls ending in outer corners.
The floor contracts if exposed to very low RH% (under 30%).
- In doorways (transition between rooms) and in areas which do not join symmetrically the flooring has to be divided with expansion profiles. This also applies if the room length or width exceeds 15 m.

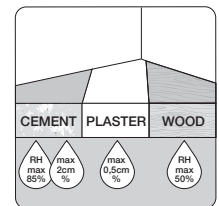
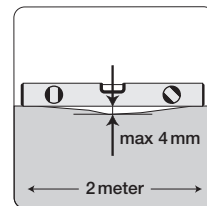


SUBFLOOR

BerryAlloc Grand Avenue can be installed on most hard subfloors (compression strength CS of min. 300 kPa), e.g. chip/plasterboards, PVC or concrete (secure the subfloor construction from noises). Soft material, like a wall-to-wall carpet needs to be removed. The subfloor must be even (max. +/- 2 mm per 2 m), dry and cleaned. Sharp unevenness must be rubbed down and any holes filled. If the subfloor doesn't comply with the specified requirements for flatness and stability you can experience squeaking noises in the flooring.

The subfloor must be totally dry when installing:

- Wooden and wood based material, max. 50 % relative humidity
- Concrete and light concrete floor, max. 85 % relative humidity or 2,0 CM % (1,8 CM % if floor heating)
- Plaster and plaster based floor, max. 0,5 CM % (0,3 CM % if floor heating)



Concrete/light concrete subfloors, ceramic tiles (de-spite of an integrated moisture barrier or if a floor covering is installed on top), floor coverings and underfloor heating constructions in general must have a moisture barrier. Use a non-ageing PE-foil with the thickness of min. 0,20 mm which is applied with a joint overlap of min. 20 cm, taped and turned up against the walls. Clean-cut plastic foil when floor installation is finished.

NB: Do not use additional underlay!

TOOLS

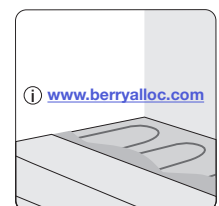
Saw, measuring tape and 4mm spacers

FLOOR HEATING

Prior to installation of BerryAlloc Grand Avenue a moisture barrier with a minimum thickness of 0,20 mm must be installed. All heating elements must be turned off during installation and the temperature of the subfloor must be between 18 and 20 °C. After installation the temperature can be increased gradually, but not exceeding 27 °C. The floor should not be installed over different heating zones without the use of expansion profiles.

Electric floor heating: The insulation plates used must have a compressive strength (CS) of min. 300kPa (30 tons/m²)

Waterborne underfloor heating: When installing with track plates, use hard pressure distribution plates.



Kindly visit our webpage

<https://www.berryalloc.com/en/nb/laminate/laminate-hpl/grand-avenue/support>

for further information about floor heating prior to installation.

GRAND AVENUE (HPL) INSTALLATION INSTRUCTIONS



2. INSTALLATION

PRECAUTION

We strongly recommend to watch our installation video and to read/download the warranty conditions on our website:

<https://www.berryalloc.com/en/nb/laminate/laminate-hpl/grand-avenue/support>

CHECK all floorboards for visible defects in optimal light conditions, both before and during installation. Floorboards with defects must not be used.

STORE the flooring packages (unopened) at room temperature for at least 48 hours or until they reach the room temperature (18-25°C), prior to commencing installation.

The relative humidity is required to be between 30 and 60 % RH. If the indoor climate is not within mentioned limit then the flooring can shrink (or expand), which can result in warping and openings in the floor.

MEASURE the room to create a balanced layout. By measuring, you will be able to determine if the first row needs to be cut. The first and last rows should not be less than 5 cm wide.

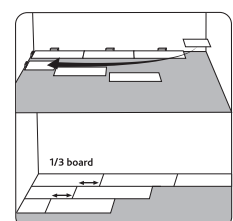
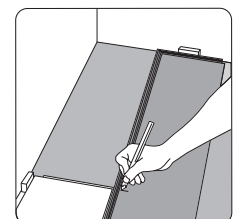
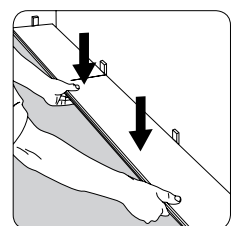
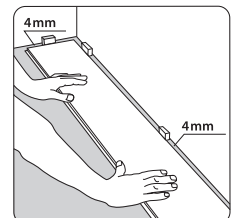
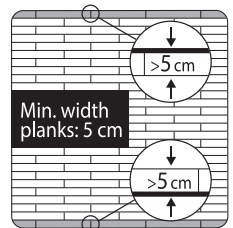
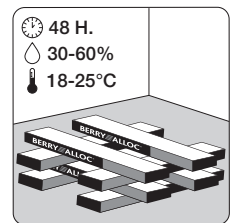
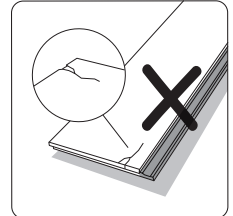
On an existing wooden floor BerryAlloc Grand Avenue is to be installed across the old planks.

START in the left corner. Place the floorboard with the aluminium strips facing the room and install towards the right. Leave a gap of 4 mm between the short side and the wall. Use spacers (incl. in **BerryAlloc Startkit**!) The gap between the long side and the wall can be adjusted after 3 rows have been installed.

PLACE the next board into the short side of the first one as shown in the illustration. Ensure that you have a tight short side connection between the floorboards. Continue in the same way with the next boards in the same row.

ENDING THE ROW: Place the final floorboard faced down (aluminium strips facing the room) with the short side positioned 4 mm from the wall. Mark the place where the floorboard is to be cut. Place the floorboard faced down (when using a jigsaw) on the work surface and cut to size. Start by cutting the aluminium strip. Make the cut as right-angled as possible. Turn the cut piece around and connect it to the short side of the previous floorboard. You can also use a handsaw (fine-tooth type) or a mitre saw. Remember then to cut the floorboard faced up.

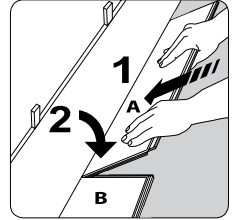
STARTING THE 2ND ROW: The end joints must be staggered min. 1/3 of a floorboard. If the cut piece of board is too short/long, start with a new board cut in half.



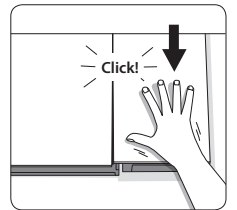
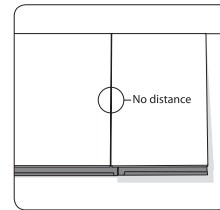
GRAND AVENUE (HPL) INSTALLATION INSTRUCTIONS**PLACE THE FLOORBOARD (A)** in an angle of +/- 20°.

Position the short side, directly over the lock of the installed floorboard (B).

A click sound will indicate that the short end connection is locked.

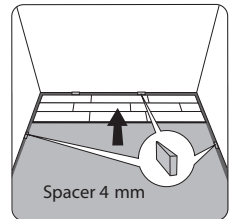


We recommend to connect the short side by tapping with your fist (or a tapping block and rubber hammer), starting in the inner corner and moving towards the outside corner.

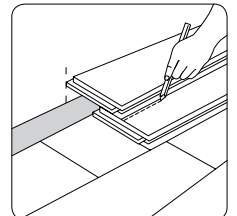


After installing 3 complete rows, slide the floor towards the wall, leaving a gap of 4 mm.

Use spacers! If the wall is uneven, the floorboards in the first row must be adapted to its contours. This is done by marking the wall shape on the floorboards and removing the first row. Cut the floorboards as required and re-install them by sliding them angled, into the already installed row.



THE LAST ROW must be more than 5 cm wide. Measure the width of the row. Leave a gap of 4 mm to the wall. Cut off (lengthwise) the unneeded part with the aluminium strip. Install the cut floorboard. Use the angle iron when installing the last floorboard in the row.



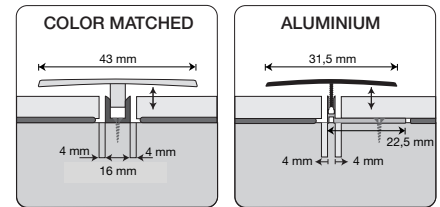
GRAND AVENUE (HPL) INSTALLATION INSTRUCTIONS



3. ADDITIONAL INSTALLATION DETAILS

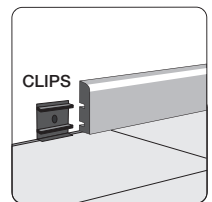
T-PROFILE

Fasten the base profile to the subfloor and leave a gap of 4 mm to the floor section. Click the T-profile in place after installing the floorboards. The floorboards should be able to move freely. For the aluminium version the SilentSystem underlay should be removed along the edge to make room for the base profile.



SKIRTING

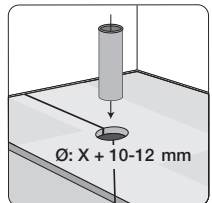
Use our BerryAlloc Clips when installing our matching skirting, to be able to remove it easily. The clips should be placed with 50cm intervals. Tip for cutting in corners: Support the skirting with a clip on the backside when cutting to make the correct angle. You can also use glue or nail the skirting.



PIPES/SCREWS

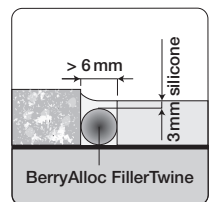
Drill holes in the floorboard for pipes or screws to be fixed to the subfloor. The hole must be 10-12mm wider than the diameter of the object.

For fixed installations, like pipes, cut out the necessary piece in an angle of 45°. Glue the sawn piece back into position and cover with pipe sleeves or silicone (see next point).



TERMINATION WITH SILICONE

BerryAlloc FillerTwine is placed in the gap (width min. 4 mm) and covered afterwards with a thin layer of elastic silicone in a matching colour. The use of silicone will reduce the movement of the floor and should only be used in limited areas.



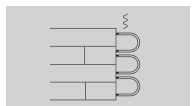
SPECIAL REQUIREMENTS

DISMANTLING THE FLOOR: Lift the row a few cm up and tap along the long side joint. The row is released and can gently be pulled out. Slide the planks sideways to release on the short end.



NB: To avoid damages on the locking system the floorboards need always to be bent upwards when separating them.

LOOKING FOR MORE INFO?



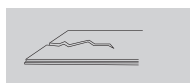
FLOOR HEATING

<https://dam.bintg.com/brochure/482885cf-03ad-44e1-b492-0df242a8beae>



CARE AND MAINTENANCE

<https://dam.bintg.com/brochure/9aa59f2e-09ac-44d2-8321-e523ec730507>



WARRANTY

<https://dam.bintg.com/brochure/C2062968-f7a0-4927-8d20-9d010b953203>



WATER STRESS – INSTALLATION IN A WATER-LOADED AREA

<https://dam.bintg.com/brochure/b72bdd21-efb6-438b-b4c2-134c2224d26c>