



ASPECTA<sup>®</sup>  
TEN

Featuring  **ISOCORE** Technology

A NEW DIMENSION IN FLOORING



ISOCORE TECHNOLOGY™  
STRONG INSIDE, BEAUTIFUL OUT.

Look under the surface of a stunning ASPECTA® TEN floor and you'll find the perfect backbone.

ISOCORE Technology™ is made with extruded closed-cell vinyl construction so it's strong and rigid, yet incredibly light. This makes ASPECTA TEN highly durable, easy to install and 100% Waterproof.



# ASPECTA® TEN

A NEW DIMENSION IN FLOORING

Get ready to discover ASPECTA® TEN. The result of four years of ground-breaking research and development, ASPECTA TEN consists of a 0.118"/3mm LVT applied on an extruded vinyl structural core. We have combined a number of cutting edge technologies to create a strong and beautiful flooring system that matches the look of natural textures, with the durability and comfort only LVT provides.

# INTRODUCING ISOCORE

FLAWLESS TECHNOLOGY FOR BEAUTIFUL DESIGNS

ISOCORE Technology™ forms the closed cell foamed vinyl structural core of ASPECTA TEN flooring. It's what makes ASPECTA TEN so brilliantly unique.

- ISOCORE Technology™ is durable and dimensionally stable – ideal for the current trend in longer planks and tiles.
- It is 100% waterproof, another reason why ASPECTA TEN is the perfect solution for the commercial flooring sector.
- Although strong, ASPECTA TEN is amazingly light at only 20.7Lbs/9.4kg per Sq.M, so it's incredibly easy to transport and install.

# EFFORTLESS INSTALLATION

STUNNING RESULTS

Thanks to ASPECTA TEN's factory applied PE underlayment, it can be laid directly onto existing tiles and flooring.

- ASPECTA TEN's thick, polyethylene foam underlayment, combined with its revolutionary ISOCORE Technology™, allows it to be installed over substrates with minor imperfections that would typically telegraph through a traditional, glue-down LVT floor.
- This innovative foam underlay works hard to eliminate excessive noise, whilst creating a comfortable flooring underfoot. This is perfect for busy commercial environments where noise needs to be kept to a minimum and comfort is crucial.
- ASPECTA TEN's size range makes installation even quicker for large commercial surface areas. It is available in 17.64" x 35.67"/448mm x 906mm tiles or 8.66" x 59.45"/220mm x 1510mm long planks. Our range now also includes XXL planks which measure 8.62" x 71.61"/219mm x 1819mm.

# ULTRA-FRESH

WHEN HYGIENE AND SAFETY COME FIRST

Ultra-Fresh is a pioneering technology that is added to both the top and bottom layer of ASPECTA TEN flooring. It inhibits the growth of odor and stain-causing mold and mildew.



## 1 CERAMIC BEAD OVERLAY TREATED WITH ULTRA-FRESH

Microscopic ceramic particles suspended in a UV cured urethane coating for superior wear and stain resistance and easy care and maintenance. Ultra-Fresh antimicrobial additive inhibits the growth of odor- and stain-causing mold and mildew.

## 2 CLEAR VINYL WEAR LAYER

A 28mil (0.7mm) transparent vinyl wear layer provides protection against scuffs and abrasions, even in demanding commercial environments.

## 3 HIGH-RESOLUTION PRINTED DECORATIVE FILM

High-resolution printed film delivers the beauty and realism of natural wood, stone, masonry and leather with vivid clarity.

## 4 0.118"/3MM SOLID VINYL TOP LAYER

Multiple layers of solid virgin vinyl enhance durability and facilitate authentic embossing.

## 5 ISOCORE TECHNOLOGY™

A 0.197"/5mm thick highly engineered closed-cell extruded vinyl structural core. ISOCORE Technology™ is 100% waterproof, rigid, light, strong and dimensionally stable.

## 6 CLIC LOCKING TECHNOLOGY

Clic technology is profiled on long-edges of planks and tiles to facilitate a fast, floating-floor installation.

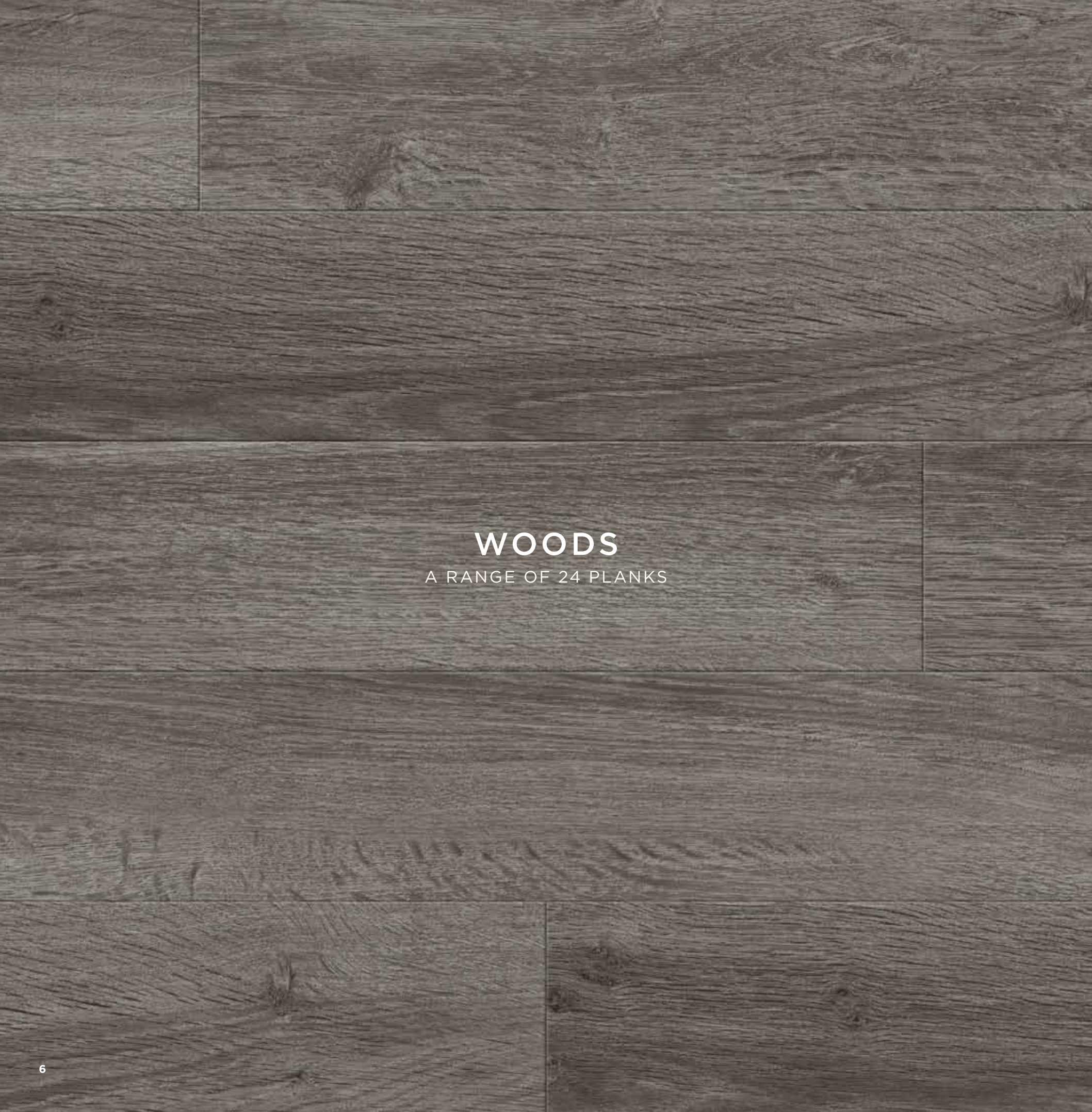
## 7 DROPLOCK 100 SYSTEM TECHNOLOGY

End joints utilize DropLock 100 system technology to facilitate a fold-down locking connection that dramatically expedites installation speed and aligns the top-surfaces of adjoining planks and tiles.

## 8 INTEGRAL SOUND MITIGATING UNDERLAYMENT

A pre-attached underlayment that minimizes both reflected and transmitted sound, is shock-absorbing, provides warmth and comfort underfoot and helps further conceal subfloor imperfections.





**WOODS**  
A RANGE OF 24 PLANKS



**STONE, MASONRY & LEATHER**  
A RANGE OF 10 TILES



# WOODS

ASPECTA® TEN marks a whole new level of authenticity in wood grain design.

8.66” x 59.45”/220mm x 1510mm long planks address the demand for larger plank and print widths. We have also introduced an XXL plank range which is available in the larger size of 8.62” x 71.61”/219mm x 1819mm. All our planks feature in-register embossing textures that really capture the intricate figuring and grain of reclaimed or repurposed wood.

ASPECTA® TEN designs come in a carefully curated selection of colors, offering everything from rich wood tones to dramatic darks and striking neutral Greys. Whether hospitality, retail or office space, these new wood finishes have the flair to bring any interior together.







BRINDLE OAK

A time-worn weathered oak, the soft grain and subtle colors of Brindle Oak give any room a feeling of instant comfort and familiarity. It creates a warm, welcoming mood that can unify a space without overpowering it.

Size: 8.66" x 59.45"/220mm x 1510mm  
Emboss: In-Register



BRINDLE OAK - COLOR: BURNT SAND - PATTERN# 0412312



BRINDLE OAK - COLOR: SUN DRIED - PATTERN# 0412318



BRINDLE OAK - COLOR: SAND DRIFT - PATTERN# 0412316



With its refined, multi-layered stain and hand-rubbed oak, Tally Oak lends an understated elegance to any space. The distinctive grain scale and eye-catching figuring carries through all seven colors, offering a full complement of choices.

Size: 8.66" x 59.45"/220mm x 1510mm  
Emboss: In-Register



TALLY OAK - COLOR: GOOD BROWN - PATTERN# 0412418



TALLY OAK - COLOR: BURNISHED GOLD - PATTERN# 0412142



TALLY OAK - COLOR: LIGHT GREY - PATTERN# 0412416



TALLY OAK





TALLY OAK - COLOR: SMOKE BROWN - PATTERN# 0412147



TALLY OAK - COLOR: BROWN - PATTERN# 0412144



TALLY OAK - COLOR: TAN - PATTERN# 0412141



Tanley Hall harnesses the character of reclaimed wood in a sophisticated, unfussy style. Strong cathedral figuring along each plank combines with a hint of the 'cross fire' effect you'd see in a rift cut library panel to give it real personality.

Size: 8.66" x 59.45"/220mm x 1510mm  
Emboss: In-Register



TANLEY HALL - COLOR: BURNT SIENNA - PATTERN# 0414715



TANLEY HALL - COLOR: SHALE - PATTERN# 0414717



TANLEY HALL - COLOR: RUSTIN - PATTERN# 0414711



TANLEY HALL - COLOR: COCO - PATTERN# 0414710





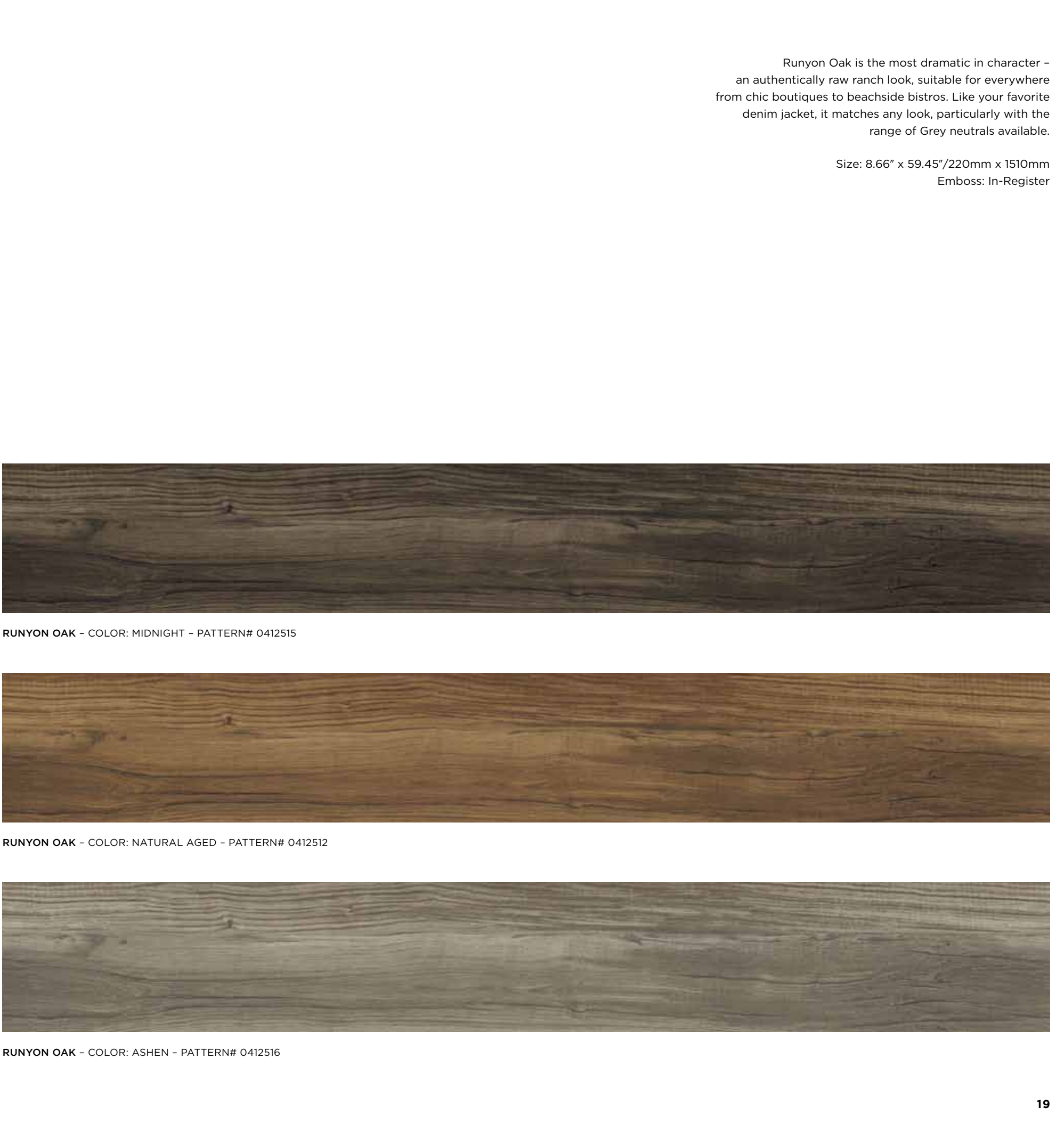


CRESCENT OAK - COLOR: TUNDRA - PATTERN# 0022317



RUNYON OAK

18 RUNYON OAK - COLOR: GREIGE - PATTERN# 0412514



Runyon Oak is the most dramatic in character - an authentically raw ranch look, suitable for everywhere from chic boutiques to beachside bistros. Like your favorite denim jacket, it matches any look, particularly with the range of Grey neutrals available.

Size: 8.66" x 59.45"/220mm x 1510mm  
Emboss: In-Register



RUNYON OAK - COLOR: MIDNIGHT - PATTERN# 0412515



RUNYON OAK - COLOR: NATURAL AGED - PATTERN# 0412512



RUNYON OAK - COLOR: ASHEN - PATTERN# 0412516



CRESCENT OAK

For those who like to think bigger, we've extended our collection with ASPECTA® TEN XXL planks. Broader and longer at 8.62" x 71.61"/219mm x 1819mm, they promise fast, easy DropLock 100 installation for more expansive spaces. But while XXL is larger, it's also surprisingly strong and light. With every inch delivering all the benefits of our ISOCORE Technology™.

What's more, ASPECTA TEN XXL offers a perfect canvas for the sophisticated grains and colors of our Crescent Oak design. With planks closer in size to real wood, it adds to an authentic look ideally suited to hotels, restaurants and retail environments.

Size: 8.62" x 71.61"/219mm x 1819mm  
Emboss: In-Register



CRESCENT OAK - COLOR: NORTH FACE - PATTERN# 0022312



CRESCENT OAK - COLOR: TUNDRA - PATTERN# 0022317



CRESCENT OAK - COLOR: CIRRUS - PATTERN# 0022314



CRESCENT OAK - COLOR: SOUTH FACE - PATTERN# 0022316



# WOODS

ASPECTA® TEN designs come in a carefully curated selection of colors, offering everything from rich wood tones to dramatic darks and striking neutral Greys – all complemented by an In-Register emboss. The designs measure 8.66” x 59.45”/220mm x 1510mm; while our XXL planks are broader and longer at 8.62” x 71.61”/219mm x 1819mm. Whether hospitality, retail or office space, these new wood finishes have the flair to bring any interior together.



CRESCENT OAK – COLOR: SOUTH FACE – PATTERN# 0022316



TALLY OAK – COLOR: LIGHT GREY – PATTERN# 0412416



BRINDLE OAK – COLOR: SAND DRIFT – PATTERN# 0412316



TALLY OAK – COLOR: BURNISHED GOLD – PATTERN# 0412142



CRESCENT OAK – COLOR: CIRRUS – PATTERN# 0022314



CRESCENT OAK – COLOR: TUNDRA – PATTERN# 0022317



TANLEY HALL – COLOR: WEATHERED OCHRE – PATTERN# 0414718



TANLEY HALL – COLOR: RUSTIN – PATTERN# 0414711



RUNYON OAK – COLOR: ASHEN – PATTERN# 0412516



TANLEY HALL – COLOR: SHALE – PATTERN# 0414717



CRESCENT OAK – COLOR: NORTH FACE – PATTERN# 0022312



BRINDLE OAK – COLOR: SUN DRIED – PATTERN# 0412318



TALLY OAK – COLOR: TAN – PATTERN# 0412141



BRINDLE OAK – COLOR: BURNT SAND – PATTERN# 0412312



TANLEY HALL – COLOR: COCO – PATTERN# 0414710



RUNYON OAK – COLOR: NATURAL AGED – PATTERN# 0412512



RUNYON OAK – COLOR: GREIGE – PATTERN# 0412514



BRINDLE OAK – COLOR: EVENING SMOKE – PATTERN# 0412319



TALLY OAK – COLOR: BROWN – PATTERN# 0412144



TALLY OAK – COLOR: GOOD BROWN – PATTERN# 0412418



RUNYON OAK – COLOR: MIDNIGHT – PATTERN# 0412515



TALLY OAK – COLOR: OILED CHARCOAL – PATTERN# 0412419



TALLY OAK – COLOR: SMOKE BROWN – PATTERN# 0412147



TANLEY HALL – COLOR: BURNT SIENNA – PATTERN# 0414715





## STONE, MASONRY & LEATHER

For the ASPECTA® TEN stone range we wanted a suite of color and textural choices varied enough to complement your vision, whatever the project.

Drawing inspiration from unexpected areas, our three tile designs measure 17.64" x 35.67"/448mm x 906mm, combine the very latest innovations in production with realistic embossing to offer something truly unique. Something that not only enhances the appeal of your environment, but is designed to endure and impress for many years to come.





FULTON HYDE

Fulton Hyde delivers a strikingly unique leather patina in two rich tones. Intricate rivulets of wear cracks tell the story of age worn proudly, a well-loved item whose comfort-folds and blemishes are only enhanced by time.

Size: 17.64" x 35.67"/448mm x 906mm  
Emboss: Calf Skin



FULTON HYDE - COLOR: BURNT CHILI - PATTERN# 0643713



FULTON HYDE - COLOR: BURNT CARAMEL - PATTERN# 0643712



A deceptively rich concrete detail, Urban Grid can enhance most design approaches, offering a versatile, contemporary dimension. The scale of this concrete patterning and the color range provide an expansive foil to any designer.

Size: 17.64" x 35.67"/448mm x 906mm  
Emboss: Honed Stone



URBAN GRID – COLOR: PRECAST GREY – PATTERN# 0661215



URBAN GRID – COLOR: ARCTIC IVORY – PATTERN# 0661212



URBAN GRID – COLOR: DARK GRAPHITE – PATTERN# 0661214



URBAN GRID – COLOR: AGED SLATE – PATTERN# 0661213



URBAN GRID





CORNETO

A clean abstracted Corneto, this stone draws inspiration from a metal so wonderfully corroded by the decades that, once translated into a design, feels so organic it's hard to believe its origins are not in nature.

Size: 17.64" x 35.67"/448mm x 906mm  
Emboss: Coral



CORNETO - COLOR: CAMBRIAN - PATTERN# 06441109



CORNETO - COLOR: CLOUD - PATTERN# 06441104



CORNETO - COLOR: SHALE GREY - PATTERN# 06441108



CORNETO - COLOR: ECRU - PATTERN# 06441105



# STONE, MASONRY & LEATHER

Drawing inspiration from unexpected areas, our three tile designs measure 17.64" x 35.67"/448mm x 906mm and combine the very latest innovations in production. The designs feature realistic Calf Skin, Coral and Honed Stone embossings, so as to offer something truly unique. Something that not only enhances the appeal of your environment, but is designed to endure and impress for many years to come.



CORNETO - COLOR: CLOUD - PATTERN# 06441104



CORNETO - COLOR: ECRU - PATTERN# 06441105



CORNETO - COLOR: SHALE GREY - PATTERN# 06441108



CORNETO - COLOR: CAMBRIAN - PATTERN# 06441109



URBAN GRID - COLOR: ARCTIC IVORY - PATTERN# 0661212



URBAN GRID - COLOR: PRECAST GREY - PATTERN# 0661215



URBAN GRID - COLOR: AGED SLATE - PATTERN# 0661213



URBAN GRID - COLOR: DARK GRAPHITE - PATTERN# 0661214



FULTON HYDE - COLOR: BURNT CHILI - PATTERN# 0643713

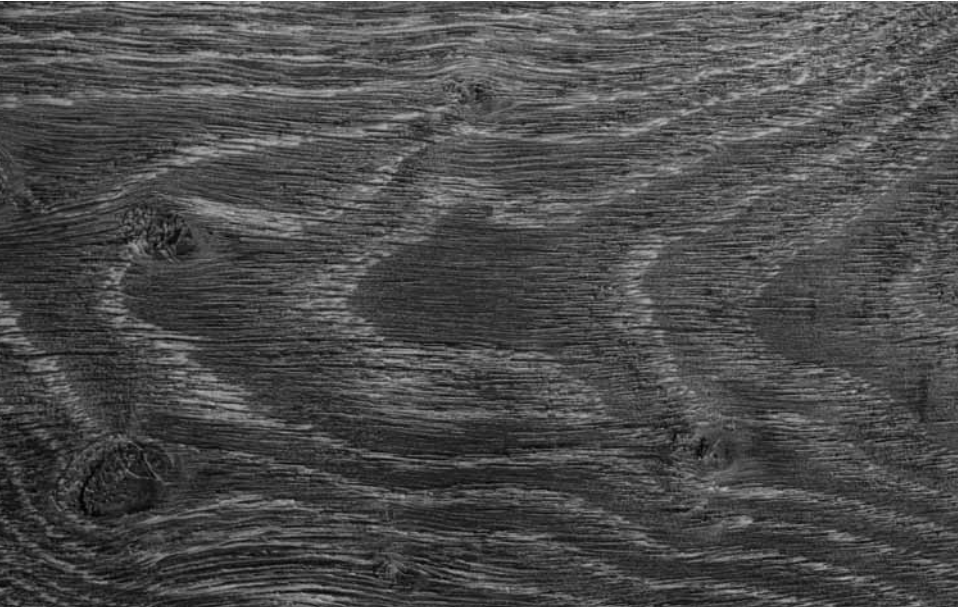


FULTON HYDE - COLOR: BURNT CARAMEL - PATTERN# 0643712



EMBOSS

Discover ASPECTA® TEN's stunning collection of in-register wood embosses. The ASPECTA® TEN Tile boasts a range of unique embossing techniques: Honed Stone, Calf Skin and Coral.



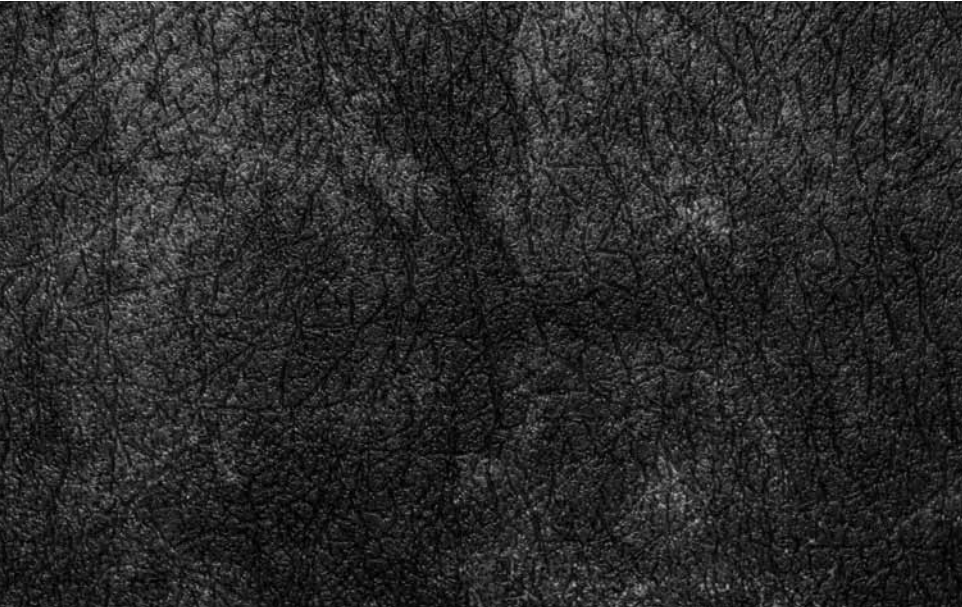
**TALLY OAK** - A classic white oak that has been wire brushed, then hand rubbed with tong oil and colored bees wax. The embossing was created to enhance the rich graphic grain pattern of the wood.



**TANLEY OAK** - A traditional oak look with even graining and small, tight cathedrals. The embossing brings out the tried and true character of this design.



**URBAN GRID** - Urban Grid uses Honed Stone embossing, which is a smooth all-over texture that gives a simple yet elegant surface with a soft lustre.



**FULTON HYDE** - The Calf Skin embossing of this design adds an overall texture without being overpowering. It delivers a distinct two-toned leather patina, with cracks and wear that only get better with age.



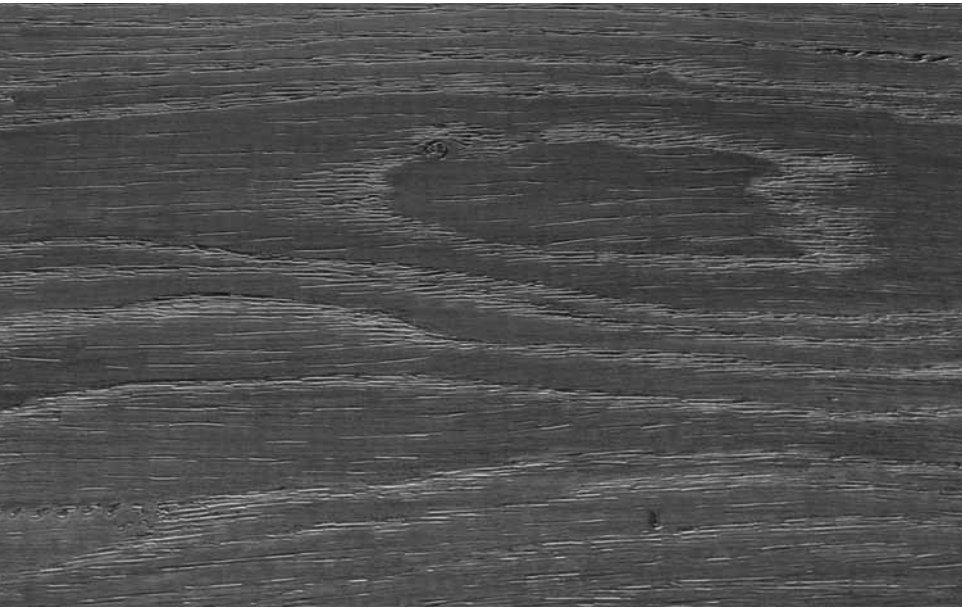
**BRINDLE OAK** - Inspired by the mature oak planks found on an old spring house in Wyoming, this embossing captures the fine lines of the wood that years of exposure to the elements create.



**RUNYAN OAK** - This design evokes the rustic and unyielding character of the old west. The embossing follows the long grain lines of the wood through all its years of growth, combined with the print to create a unique and dramatic effect.



**CORNETO** - The Coral texture of Corneto gives a beautifully smooth texture with a subtle natural stone effect.



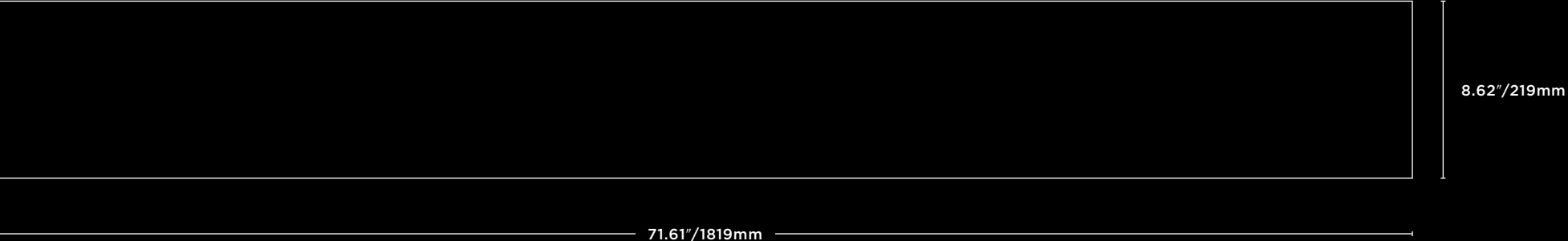
**CRESCENT OAK** - Rich in depth and variation, the Crescent Oak emboss beautifully complements the reclaimed look of our XXL design. Leaving an authentic finish, even under the closest scrutiny.



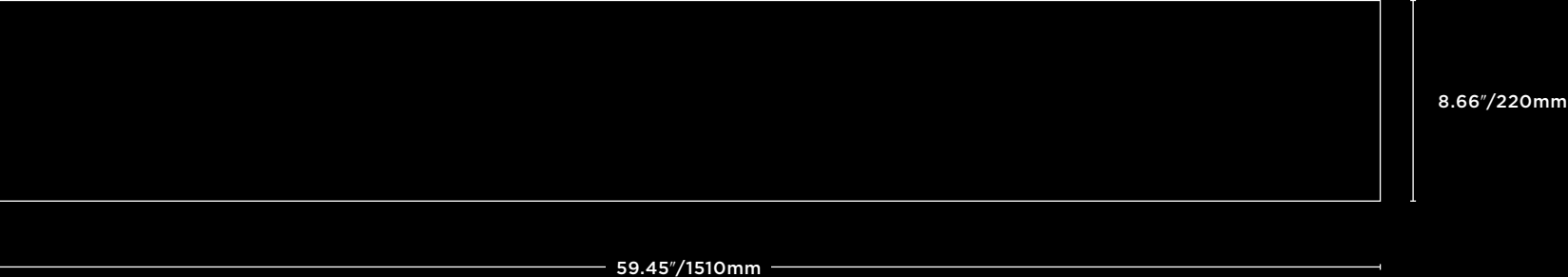
# TECHNICAL DETAILS

ASPECTA® TEN is available in larger plank and tile formats, making it much easier and quicker to lay. Sizes available are:

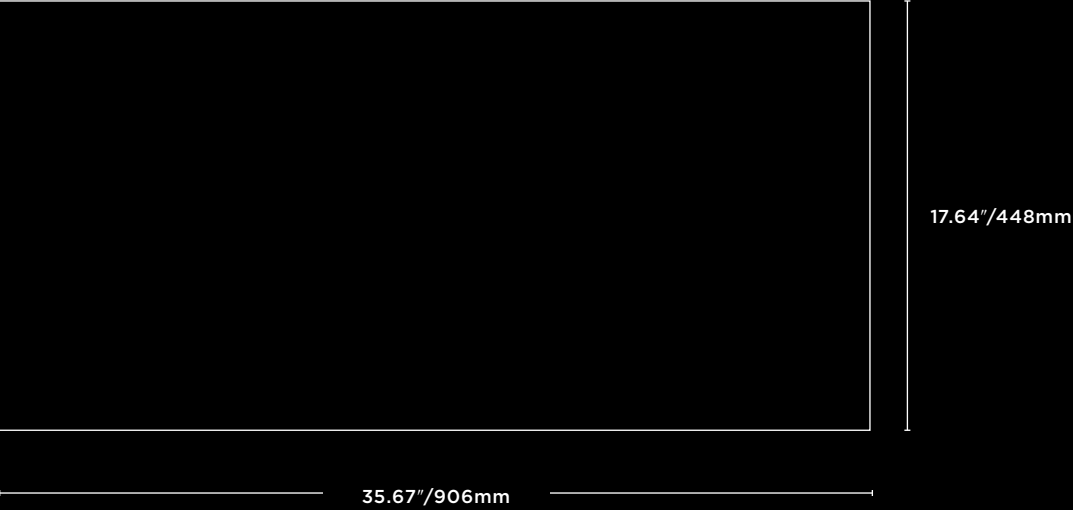
## XXL PLANK



## PLANK



## TILE







**ASPECTA**<sup>®</sup>  
A NEW DIMENSION IN FLOORING

ERME Office:  
ASPECTA BV  
Argon 37a  
4751XC Oud Gastel  
The Netherlands  
Tel: +31 (0) 88 1662500  
info@aspectaflooring.com

USA Office:  
ASPECTA US  
15 Oakwood Ave.  
Norwalk, CT 06850  
USA  
Tel +01 (855) 4007732  
info@aspectaflooring.com

APAC Office:  
ASPECTA APAC P/L C/- BDO  
Level 14, 140 William St.  
Melbourne, 3000. Vic  
Australia  
Tel: +61 (0) 41 2368067  
info@aspectaflooring.com

**ASPECTAFLOORING.COM**

05-2016